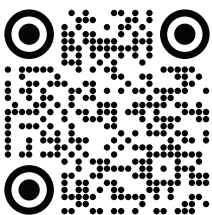




# COMPANY PROFILE

DRILLING COMPONENTS & CONSUMABLES



W E L C O M E



---

## COMPANY OVERVIEW

With over two decades of expertise, Mammoth Technologies proudly stands as a distinguished Design and Manufacturing Corporation specializing in the Mining sector, with a strong emphasis on the Drilling industry, solidifying our robust global presence.

Our product development journey has been profoundly influenced by insights gathered from our global clients' requirements, needs, and challenges. This has inspired us to create a range of durable, cost-effective solutions tailored for different sectors of the mining industry. Our products are designed to enhance safety, streamline operations, and reduce costs.

We aim to build lasting, beneficial relationships that focus on our clients' needs, which in turn keeps our business thriving.



## TABLE OF CONTENTS

|                                     |    |
|-------------------------------------|----|
| Where We Began/Company Values       | 01 |
| Our Services                        | 02 |
| Our Products                        | 03 |
| Wrenches, Shock Subs, Stemlock .... | 04 |
| Sub Adaptors, Rod Pot ....          | 05 |
| Drill Rods, String Clamps ....      | 06 |
| Bits, DTH Hammers & Bits....        | 07 |

## WHERE WE BEGAN



At Mammoth, the introduction of the **Breakout Wrench** in 1999 highlighted our commitment to innovation paired with simplicity in problem-solving. This tool not only captured attention in the global market but also exemplified our ability to tackle complex challenges with straightforward, effective solutions. By blending cutting-edge design with user-friendly functionality, we set a new standard in the industry, showcasing how thoughtful engineering can lead to practical advancements that resonate worldwide.

## COMPANY VALUES

We dedicated to innovate and develop solutions that benefit everyone when it comes to affordability, durability and quality.

- Mission -** To surpass our customers' expectations by embracing innovation, upholding integrity, applying intelligence, and investing energy.
- Vision -** To become a renowned brand in the Mining and Drilling Industry, setting benchmarks in Safety, Quality, Service, and Affordability.
- Core Values -** We are dedicated to driving success through innovation and collaboration, prioritizing customer needs with integrity.
- Commitment -** We united in our promise to innovate and develop solutions that benefit everyone when it comes to affordability, durability and quality.

We pride ourselves in our commitment to promote black empowerment with our BEE Level 1 certification and we offer a wide range of versatility in our field of expertise. We take responsibility for all phases of the process including conceptualization, market research, design, manufacturing, testing, through to distribution and service. All manufacturing (including process manufacturing) are done in-house.

We are proud to have obtained ISO 9001:2015 Accreditation, confirming our commitment to providing a professional and consistent quality service. We manufacture products of the highest quality and offer design modifications to existing products to help minimize unnecessary costs.

## OUR SERVICES

At Mammoth Technologies, we understand that investing in quality equipment is just the beginning. Our comprehensive aftermarket services are designed to ensure your systems operate at peak performance throughout their lifecycle.

### We Offer:

- Research and Development (R&D).
- CAD drawings 3D/solids, Simulations and more.
- Conceptualization.
- Process Manufacturing

### We Provide A Variety of Services



#### Recondition and Refurbish

Drill rods, Breakout Wrenches, Rod supports, Rod Guides, Stem locks, Shock Subs.



#### Pulldown Test

Measure the strength and stability of components under stress, identifying potential weaknesses before they lead to failures.



#### Air Test

Determining the volume and velocity of air moving through different sections of the mine to ensure adequate ventilation for worker safety.



#### Drill Rig Assessment

Our experts conduct detailed inspections of all critical components, including the rig structure, drilling system, and safety features.



#### Operator Assessment

Our experts conduct assessing their ability to operate ventilation equipment, monitor air quality, and perform adjustments based on test results.



#### Dull Bit Grading

Our Using the standard method of classifying drill bits for wear characteristics.

## REPAIRS

EXPERT SOLUTIONS FOR **BREAKOUT WRENCH,**  
**SHOCK SUBS, AND MORE!**



At Mammoth Technologies, we specialize in the repair and maintenance of drill mining equipment, including drill rods, shock subs, stem locks, and wrenches. Our dedicated team understands the unique demands of the mining industry and is committed to delivering high-quality service to ensure your equipment operates efficiently and reliably.

## OUR PRODUCTS

At Mammoth Technologies, we specialize in crafting high-quality, durable, and precision-engineered equipment designed to optimize the performance of drilling operations in the mining industry. With years of expertise and a commitment to innovation, we provide mining companies with the tools they need to achieve efficiency, safety, and reliability in their drilling operations.

### Why Choose Mammoth Technologies?

**Uncompromising Quality:** All our products are manufactured to the highest standards of quality and precision, ensuring reliability and performance in the most challenging mining environments.

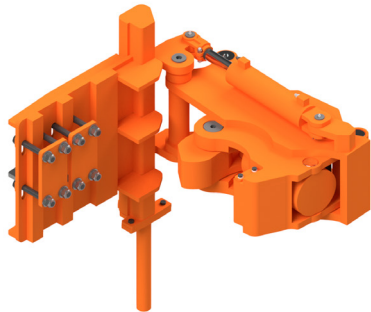
**Custom Solutions:** We understand that every mining operation has unique needs. Our team works closely with clients to design and manufacture customized solutions that meet specific requirements, improving operational efficiency and reducing costs.

**Durability & Performance:** Our products are built to last, providing superior performance in extreme conditions. With durable materials and expert craftsmanship, you can trust Mammoth Technologies to keep your operation running smoothly.

**Industry Expertise:** With years of experience in mining and drilling technology, we have the knowledge and expertise to offer solutions that make a real difference in your operations.

**Customer Support:** At Mammoth Technologies, we value our clients. Our dedicated customer support team ensures that you receive prompt, professional assistance whenever needed, from product inquiries to technical support.





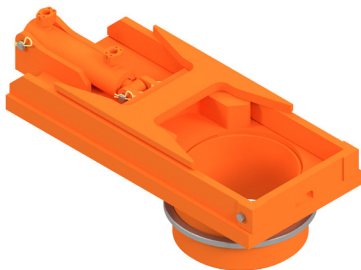
### Breakout Wrench

The Mammoth Breakout Wrench was developed to meet the requirements of a hands-free breakout wrench for all conditions and any OEM Drill Rig.



### Shock Sub

The Mammoth Shock Sub reduces vibration and shock by absorbing these energies from being transferred to the powerhead during rotational pull-down and pull-back operations.



### Stemlock

The Mammoth Stemlock is designed and manufactured to secure the drill string, enabling the breakout of the drill rod and bit.



### Rod Support

The Mammoth Rod Support holds the drill rod in place on a mast while you join or break apart drill rods/pipes even bits changes.



### Top Sub

Used when specifically referring to the connection just between the top drive and the rest of the drill string.



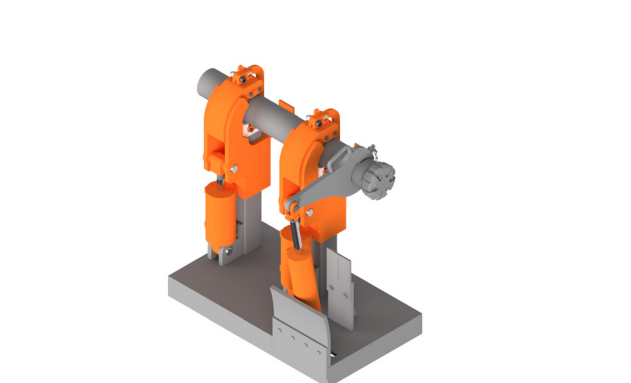
### Bottom Sub

The sub adaptor serves as a connector between different drilling components, such as drill pipes, bits, and others.



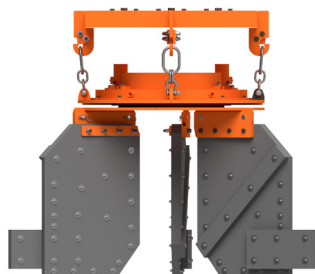
### Roller Stabilizers

A roller stabilizer cuts vibration and wear, maintains hole quality, and boosts drilling efficiency.



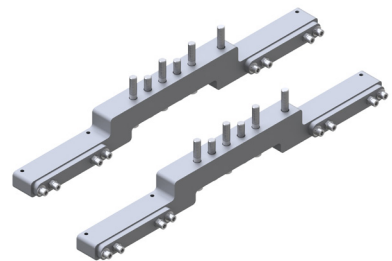
### Breakout Bench

Hands-free fully automated wrenches. Safe and reliable breakout solution to loosen the toughest joints.



### Hole Sweeper

A device fitted to the undercarriage of a drill rig with the function displacing chippings ejected from a blasthole.



### Powerhead Bracket

A structural support component, its role is to securely attach the powerhead to the mast or slide frame of the rig.

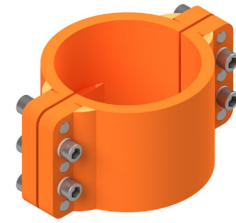




**PERFORATOR**

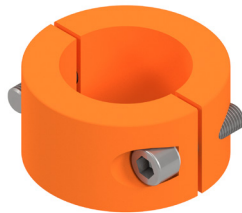
**Drill Rod**

The Mammoth Drill Rod is an addition to increasing the length of the drill bit depth to extend drilling penetration.



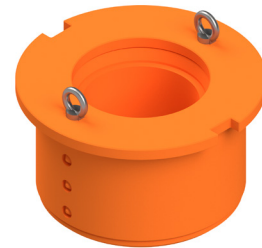
**String Clamp**

A robust mechanical device for securing and supporting the drill string during drilling operations.



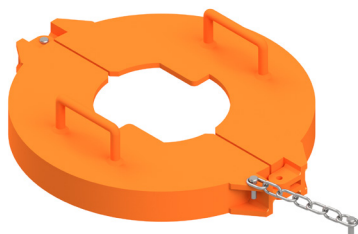
**Rod Clamp**

A device used on drilling rigs to grip part of the drill string (often the drill rods) to hold them steady.



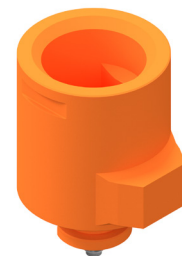
**Deckbush**

The deck bush is used to stabilize and guide the drill string as it rotates and moves through the drill process.



**Deckbush Clamp**

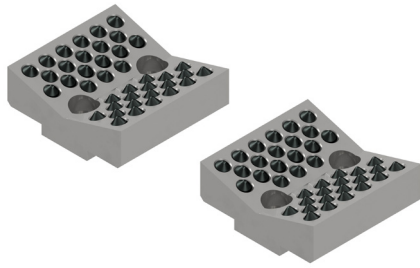
Fitted around a deck bushing to hold it aligned and stop displacement under torque, axial, and side loads.



**Rod Pot**

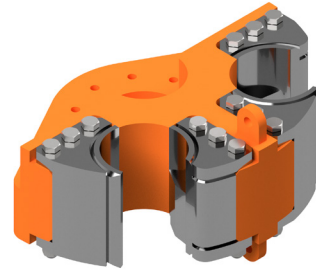
It helps store drill rods safely, prevent damage, and keeps them accessible and protected when not in use.





### Wrench Bit Jaws

Breakout wrench bit jaws securely grip drill rods and bits to unscrew threaded connections.



### Carousel Spider

A hydraulic rod handler securely grips and rotates drill rods to quickly "break out" threaded connections.



### Thread Grease

Provides proper lubrication that will help prevent wear on threads and assist you to easily loosen or fasten bits.



### DTH Hammers & Bits

It delivers powerful, efficient drilling by combining rotation and impact, making it ideal for mining, construction, and water well drilling.



### Tricone Bit

Three rotating cones that crush and break rock during drilling. It's commonly used in oil, gas, and mining operations.





### TECHNOLOGIES

Specialising in the design & development and manufacturing of advanced drilling equipment within the mining industry.



### GLOBAL

Manufacturers and Refurbishers of hydraulic cylinders. Petrochemical related installations and Waste Oil Recovery.



### DRILLING SOLUTIONS

Manufacturers of small diameter drilling equipment for the blast hole and borehole drilling industry.



### PROFAB

Specialists in design, development, Laser, Profile, Cutting & Bending, Countersinking and fabrication.



### MAMMOTH LLC (USA)

Distribution, after market support and maintenance to Mammoth products and systems.

### A MAMMOTH COMPANY



Compressor & Engine Engineering

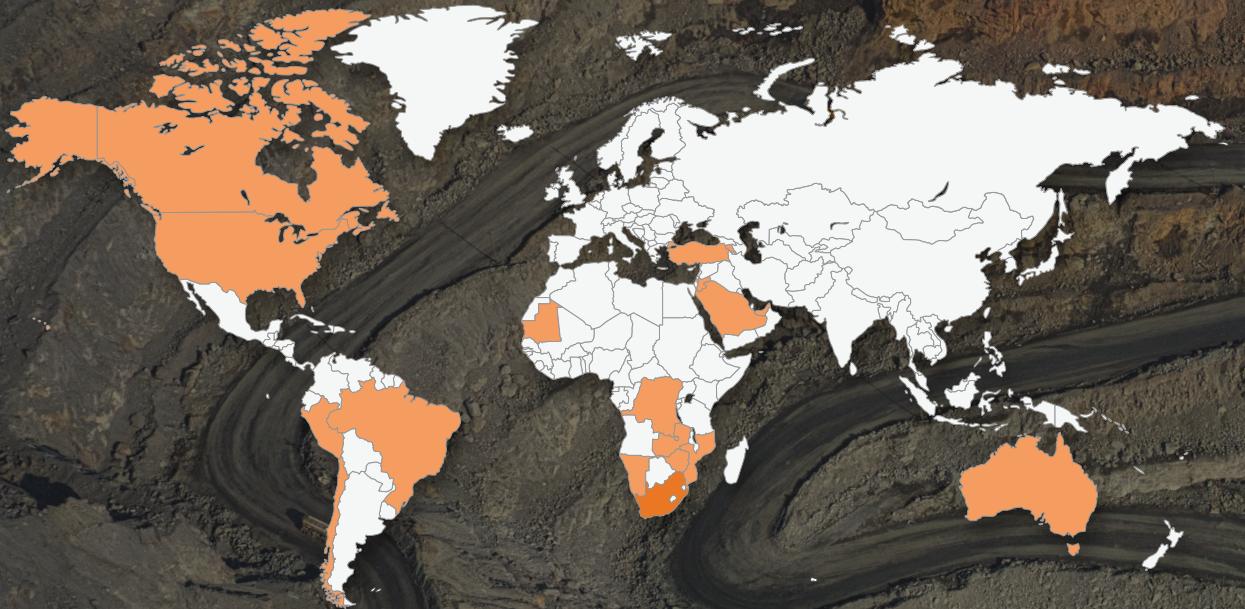
Specialists in compressed air and Locomotive compressor and Vacuum systems.

**B-BBEE**  
**LEVEL**  
**CONTRIBUTOR 2**





## MAMMOTH FOOTPRINT



### MAMMOTH BRANCHES

#### HEAD OFFICE

+27 (0)12 541 4196

enquiries@mammothtech.co.za  
www.mammothtech.co.za

108 Kotzenberg Street,  
Akasia, Rosslyn, Pretoria, South Africa

#### WITBANK

+27 (0)13 656 1380

enquiries@mammothtech.co.za  
www.mammothtech.co.za

9A Chopin Street, Klarinet Business Area,  
Emalaheni, Mpumalanga, South Africa